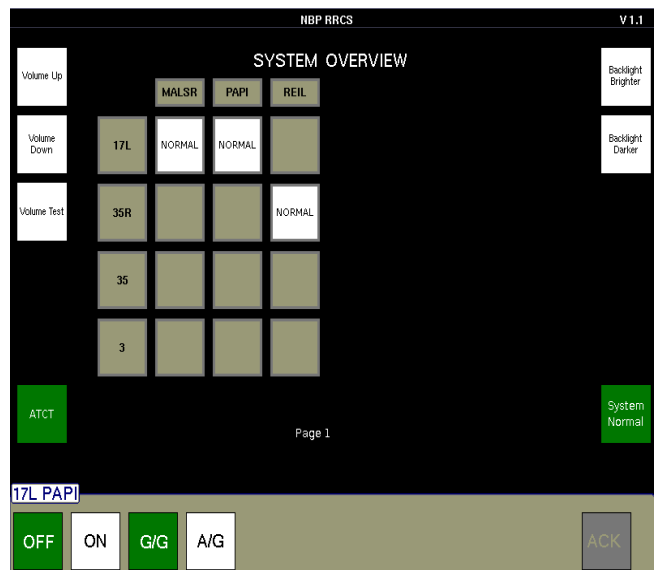
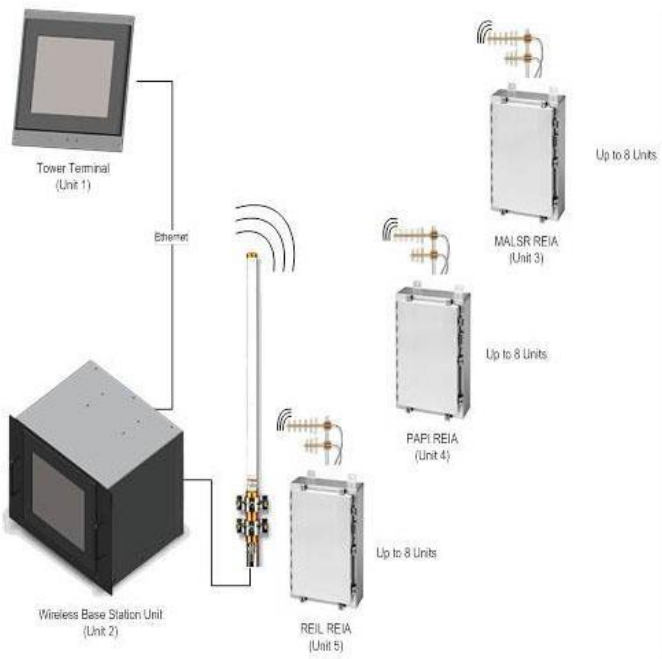


# NextGen RRCS

Remote Radio Control System



# NextGen RRCS

## Remote Radio Control System

### SYSTEM DESCRIPTION

The Newly designed NextGen RRCS was developed to meet the needs of large and small airports alike. Combining the features and function of the traditional RRCS, with the practicality of a touch screen monitor, the NextGen RRCS maintains wireless functionality while offering real time control and monitoring to the operator. RRCS provides remote control of airport visual aid lighting systems. RRCS switches the visual aid lightning on and off, selects lightning intensity levels for appropriate systems and switches between ground to ground / air to ground control for any or all systems.

### SYSTEM OPERATIONAL SPECIFICATIONS

- Allows control and status of up to 24 Remote Equipment Interface Assemblies (REIA)
- Configured for up to 24 runway approaches
- ICMS interface
- When in MAINT mode the Tower Terminal cannot control equipment
- Wireless functionality eliminates the need for expensive laying of fiber optic or copper cables

### EQUIPMENT SUPPORTED

- MALSR
- LDIN
- REIL
- PAPI
- ODALS
- VASI
- ICMS – Wireless Integration

### SYSTEM ENVIRONMENTAL SPECIFICATIONS

- Radio frequency: 165.76250MHZ, same as current RRCS
- Designed per Human Factors Design Standard (FAA-HF-STD-001)
- Status: AC or DC signals
- Control: 120Volts